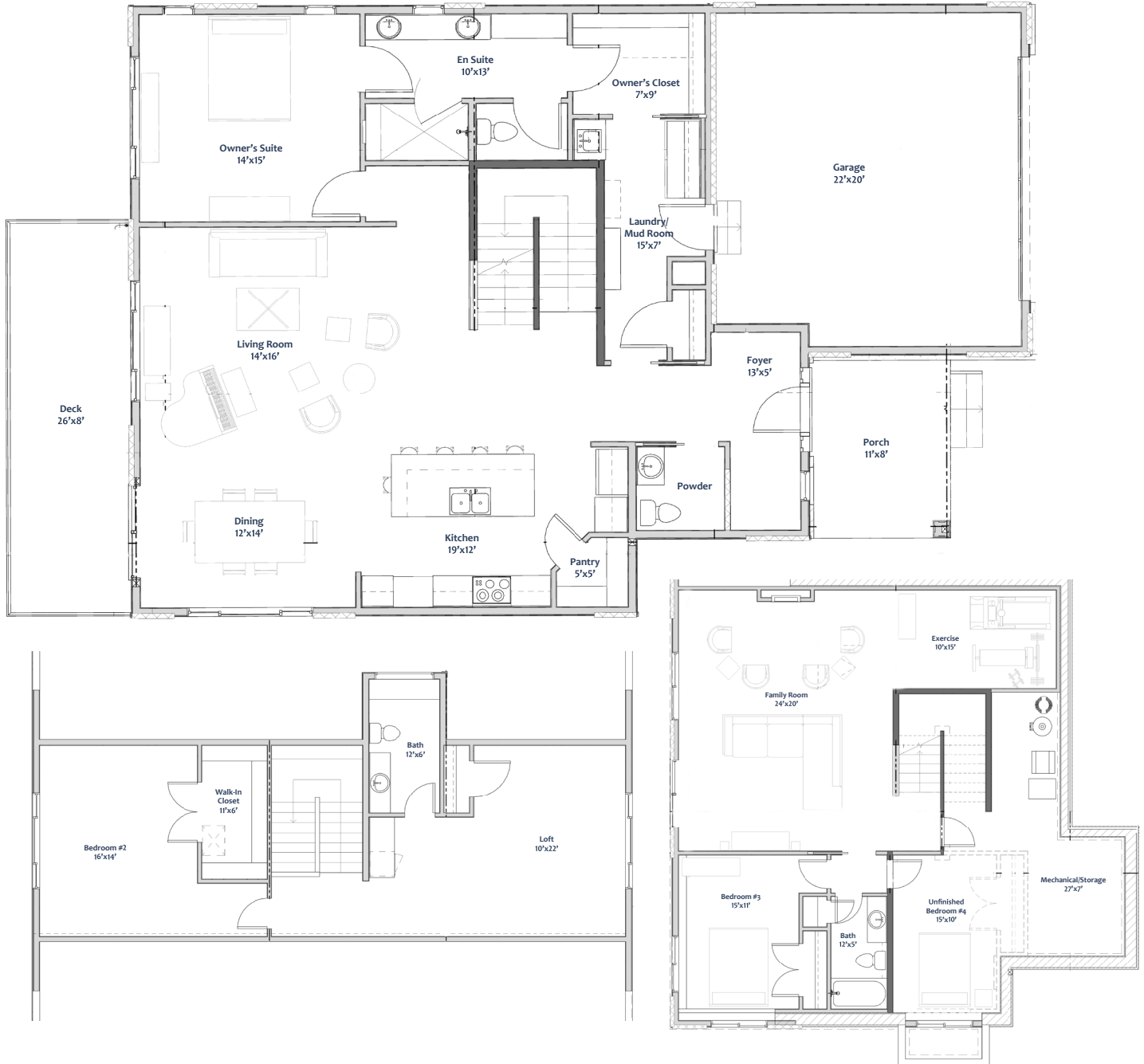
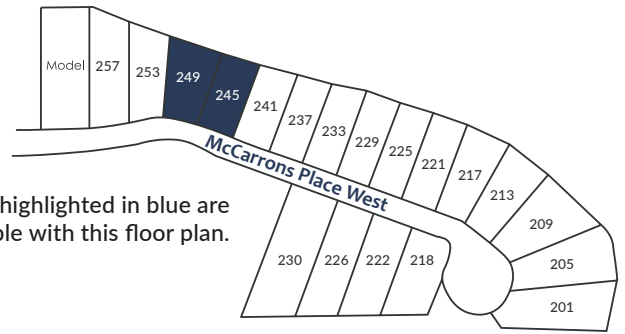


Starling Floor Plan

3 Bedrooms
 4 Bathrooms
 Total: 3,342 sq ft
 Loft: 842 sq ft
 Main Floor: 1,539 sq ft
 Lower Level: 961 sq ft



Ovation Homes, LLC is committed to the improvement of design and construction, an ongoing process, therefore floor plans, square footage, prices, finishes, and features are subject to change without notice. Copyright © 2022. All rights reserved.