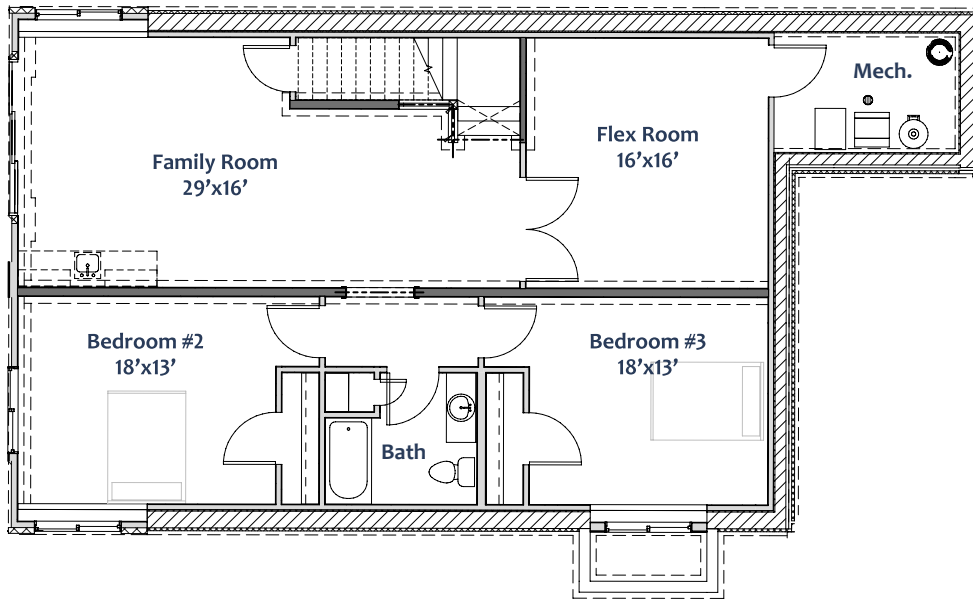
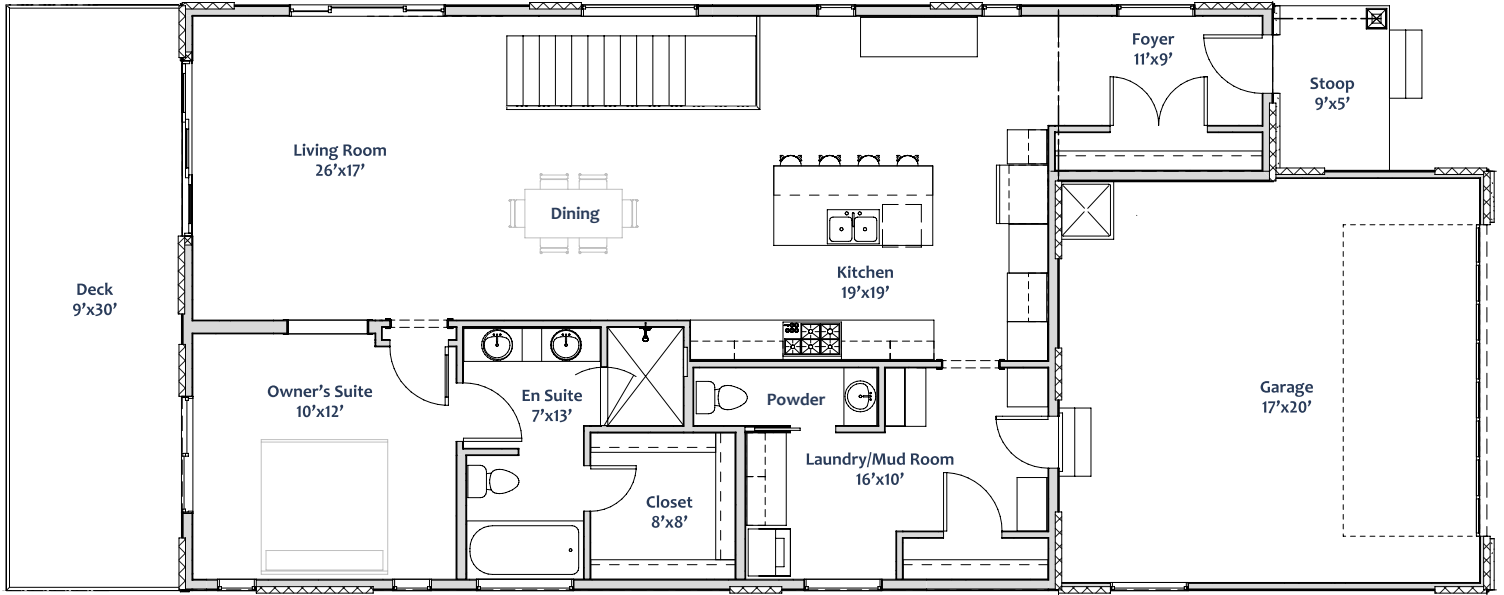
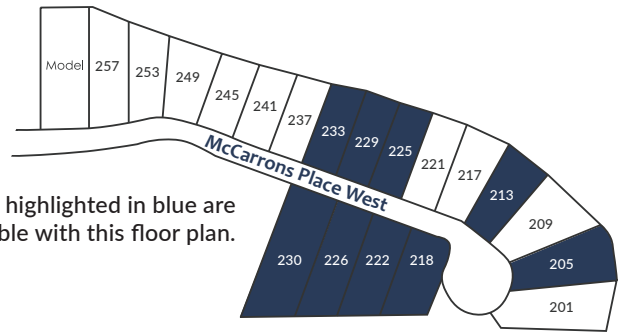


# Osprey Floor Plan

3 Bedrooms  
 3 Bathrooms  
 Total: 2,772 sq ft  
 Main Floor: 1,449 sq ft  
 Lower Level: 1,323 sq ft



Ovation Homes, LLC is committed to the improvement of design and construction, an ongoing process, therefore floor plans, square footage, prices, finishes, and features are subject to change without notice. Copyright © 2022. All rights reserved.